

TARIFFS

2020/2021

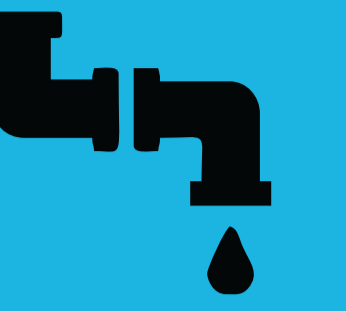
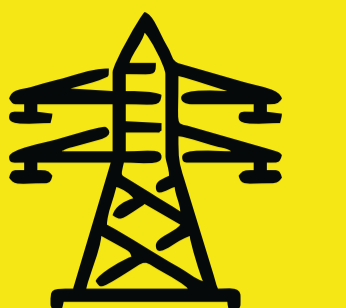
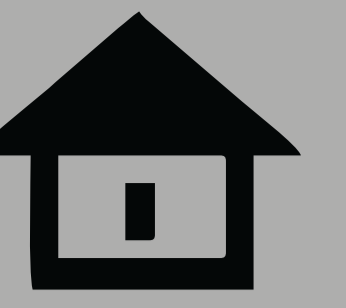


Property 4%

Electricity 6.22%

Water 6.6%

Refuse 5.2%



KNOW MORE ABOUT 2020/2021 TARIFFS AND UNDERSTAND WHAT YOU PAY FOR

Council tariffs are reviewed annually and then increased by a determined % in line with budget guidelines. These equitable and affordable increments contribute to the running of the City and ensure continuous service provision to all the customers of the City of Johannesburg. Understanding your tariffs helps you know what you pay for and how it is calculated. Your tariffs are a structure that is used to determine what different property categories customers will be charged, this is to help customer pay in line with their usage and lifestyle, as well as property categorisation.

Residential Prepaid

Residential prepaid (374 kWh/m)

As can be seen from the table across the Residential Prepaid Tariff block sizes will remain the same as follows:

Block 1: 0-350kWh/m	Block 2: >350-500kWh/m	Block 3: >500kWh/m
Assumed Usage	374	
Block Size	Usage	Tariff (c/kWh)
Block one 350 350	350 24	139.4
Block two 500 500	24 0	159.9
Block three >500 2 000 000 0	0 0	182.2
Sub-Total		526.3
Service Charge		147.7
Capacity Charge		140.7
Total Charge for the Month		814.7
Average Tariff (c/kWh)		2.18

The tariff increase for the average customer that consumes 374kWh per month the average increase in the tariff will be 6.22%. Therefore, for the customer that on average consumes 374kWh/month the current charge would be R526.35 or (350kWh x R1.394) plus (24 kWh x R1.599) for FY 2020/2021 and the charge for 2020/2021 will increase to R559.08 or (350kWh x R1.4809) plus (24 kWh x R1.6987).

All customers will in addition to the above charges be liable for a Network Surcharge of 6c/kWh. The Network Surcharge will remain unchanged at 6c/kWh for FY2021. Residential customers are however, exempt from the Network Surcharge for the first 500kWh consumed per month.

The purpose of the municipal surcharge will be to ensure prepaid customers contribute to the provision and maintenance of electricity infrastructure services.

Residential prepaid customers that are registered beneficiaries of the City of Johannesburg's Expanded Social Package will be exempted from the prepaid municipal surcharge.

Residential Single Phase

Residential Single Phase 60A (450 kWh/m)

As can be seen from the table across the Residential Single Phase 60A Tariff was also increased by NERSA by an average 6.22%. Therefore, if a customer consumes on average 450kWh/month the current charge would be R1 152.20 or (450kWh x R1.3408) plus (R139.09 + R409.75), and the charge for 2020/21 will increase to R1 223.87 or (450kWh x R1.4242) plus (R147.74 + R435.24).

The tariff consists of energy charges for the respective blocks and fixed monthly Service and Capacity Charges.

Residential Single Phase 60A (Conventional) customers will in addition to the above charges be liable for a Network Surcharge of 6c/kWh. The Network Surcharge will remain unchanged at 6c/kWh for FY2021. Residential Single Phase 60A (Conventional) customers are however, exempt from the Network Surcharge for the first 500kWh consumed per month.

Residential Single Phase 60A 2019/2020 Tariff

Assumed Usage	Block Size	Usage	Tariff (c/kWh)	Total
Block one 500 500	150 0	134.08		603.36
Block two 1 000 1 000	150 0	153.87		-
Block three 2 000 2 000	0 0	165.22		-
Block four 3 000 3 000	0 0	174.32		-
Block five >3 000 3 000 000 0	0 0	182.87		-
Sub-Total				603.36
Service Charge				130.09
Capacity Charge				409.75
Total Charge for the Month				1 152.20
Average Tariff (c/kWh)				256.04

Residential Single Phase 60A 2020/2021 Tariff

Assumed Usage	Block Size	Usage	Tariff (c/kWh)	Total
Block one 500 500	150 0	142.42		640.89
Block two 1 000 1 000	150 0	175.50		-
Block three 2 000 2 000	0 0	185.16		-
Block four 3 000 3 000	0 0	194.25		-
Block five >3 000 3 000 000 0	0 0			-
Sub-Total				640.89
Service Charge				147.74
Capacity Charge				435.24
Total Charge for the Month				1 223.87
Average Tariff (c/kWh)				271.97

Tariff increase: 6.22%

Business Prepaid

Assuming that the customer on average consumes 650kWh/months the current charge would be R1 392.95 or (500kWh x R2.0970) + (150kWh x R2.2963), the charge for 2020/21 will be R1 479.57 or (500kWh x R2.2274) + (150kWh x R2.4391).

Business Prepaid customers will in addition to the above charges be liable for a Network Surcharge of 6c/kWh.

The Network Surcharge will remain unchanged at 6c/kWh for FY2021.

Business Prepaid 60A 2019/2020 Tariff

Assumed Usage	Block Size	Usage	Tariff (c/kWh)	Total
Block one 500 500	150 150	209.70		1 048.50
Block two 1 000 1 000	150 0	229.63		344.45
Block three 2 000 2 000	0 0	240.54		-
Block four 3 000 3 000	0 0	248.12		-
Block five >3 000 3 000 000 0	0 0	257.02		-
Sub-Total				1 392.95
Service Charge				147.74
Capacity Charge				409.75
Total Charge for the Month				1 950.44
Average Tariff (c/kWh)				298.53

Business Prepaid 60A 2020/2021 Tariff

Assumed Usage	Block Size	Usage	Tariff (c/kWh)	Total
Block one 500 500	150 150	222.74		1 113.70
Block two 1 000 1 000	150 0	243.91		365.87
Block three 2 000 2 000	0 0	255.50		-
Block four 3 000 3 000	0 0	264.62		-
Block five >3 000 3 000 000 0	0 0	273.01		-
Sub-Total				1 479.57
Service Charge				147.74
Capacity Charge				435.24
Total Charge for the Month				1 762.55
Average Tariff (c/kWh)				271.97

Tariff increase: 6.22%

Water Tariffs

A "tariff" means a service charge that the City charges for the use of services it renders such as water. The price of this service should be affordable to the people who use the service, and to the City itself.

The City of Johannesburg has a two tier billing system for water. As a user you are billed for the water that you consume or use and then you are billed for the water that you discharge into the sewer system after it has been used.

The calculation for consumption is based on a tariff structure applicable to different types or categories of customers. A tariff structure is a set of rules and procedures that determines how we charge different categories of consumers.

We use the term kil (kilolitre where 1kl = 1000 litres), and the water is billed on a sliding scale. Thus the more you use the higher the rate per kilolitre you will pay.

Monthly sewer is calculated based on the following:

- The billing for the sewer service is informed by the property size on freehold properties;
- Multi dwelling properties are assigned a tariff relevant to the dwelling type;
- Commercial sewer billing is dependent on water consumption.

Kilolitres per month	Rand per month
5kl	Free
10kl	R75.96
20kl	R314.01

Deemed consumption areas

This refers to even within previously disadvantage areas where a flat rate for water consumption was charged and it has not been possible to assess metered water consumption over the past 12 months:

Domestic Water Tariff - Conventional Water Meters

consumption level (kilolitres) per month	2019/2020	2020/2021
consumption of 6kl of water	54.60	-
consumption of 10kl of water	93.24	75.96
consumption of 15kl of water	175.69	175.06
consumption of 20kl of water	295.64	314.01
consumption of 30kl of water	625.14	698.01
consumption of 40kl of water	990.24	1 118.01
consumption of 50kl of water	1 456.44	1 647.91
consumption of 60kl of water	1 953.04	2 215.81

Prices illustrated exclude the demand management levy of R26.52 and VAT.

Domestic Water Tariff - Prepayment Meters

consumption level (kilolitres) per month	2019/2020	2020/2021
consumption of 6kl of water	49.92	-
consumption of 10kl of water	83.20	65.42
consumption of 15kl of water	136.60	149.77
consumption of 20kl of water	235.90	250.56
consumption of 30kl of water	551.30	615.56
consumption of 40kl of water	893.20	1 008.45
consumption of 50kl of water	1 342.90	1 499.44
consumption of 60kl of water	1 838.90	2 036.31

Prices illustrated exclude the demand management levy of R26.52 and VAT.

Commercial/Industrial

Kilolitres per connections per month	2019/2020	2020/2021
consumption up to 200kl	32.14	34.94
consumption exceeding 200kl	35.68	39.85

Prices illustrated exclude the demand management levy of R234.07 and VAT.

Sanitation Tariffs: Private Dwelling Domestic

ERF Size (m ²)	2019/2020	2020/2021
up to and including 300m ²	213.94	228.06
Larger than 300m ² to 100m ²	416.47	443.96
Larger than 1 000m ² to 2 000m ²	630.05	671.63
Larger than 2 000m ²	907.80	967.71

Prices illustrated exclude VAT.

Domestic Sanitation Tariffs - Prepayment Meters

consumption level (kilolitres) per month	2019/2020	2020/2021
consumption of 6kl of water	49.26	-
consumption of 10kl of water	82.10	35.01
consumption of 15kl of water	134.05	90.39
consumption of 20kl of water	196.75	157.22
consumption of 30kl of water	382.85	355.61
consumption of 40kl of water	568.95	553.99
consumption of 50kl of water	755.05	752.37
consumption of 60kl of water	941.15	950.75

Prices illustrated exclude VAT.

Sanitation tariffs: Other classes

Descriptions	Sewerage per unit
Institutional Buildings per kl	26.74
Institutional/Commercial per kl	33.62
Other classes of property per kl	33.62

A 2% surcharge is levied on business customers (Institutions, Commercial and Industrial) Prices illustrated excludes VAT.

Residential Indigent Consumers

Where a residential meter has been installed for the supply of water, where such water is consumed by a consumer that is declared indigent in terms of the Council's Expanded Social Package policy resolution, the table below will be applicable.

A reduction in tariff will be given to a consumer who is having a drainage installation, connected to Johannesburg Water's sewer network and who is declared indigent in terms of the Council's Expanded Social Package policy resolution. The table below will be applicable

Indigent Category	Score on prevailing CoJ Poverty Index	Allocation of additional free water per person per day (litres)	Monthly allocation cap of free water per household in which at least 50% of registered social package recipients qualify for the band in question (Kilo-litres)	Reduction in Sewerage tariff
Band 1	1 - 34	25l	10kl	70%
Band 2	35 - 70	35l	12kl	100%
Band 3	71 - 100	50l	15kl	100%

Band 1 refers to individuals / households within a vulnerability range defined by the approved CoJ Poverty index of the ESP policy.

Band 2 refers to individuals / households with some formal income that nonetheless falls below the survival range threshold set by the approved CoJ Poverty index of the ESP policy.

Band 3 refers to individuals / households with no formal income from either grants or employment, or incomes below the individual survival level as set by CoJ Expanded Social Package policy.

Expanded Social Package for 2020/2021

The Expanded Social Package (ESP) gives qualifying citizens in the City access to Free Basic Services (FBS), on their municipal services such as Rates, Refuse, Sewer, Water and Electricity.

Free basic services is defined as the minimum rebate amount provided to individuals sufficient to cover or cater for the basic needs of the household. Only indigent citizens qualify for FBS and the programme is solely intended to assist them. Citizens are required to register with the City to qualify for free basic services. The City will vet every application, selecting only those citizens that meet the criteria, based on this only successful applicant will be granted indigent status. The City can also decide on the extent to which they subsidize an indigent household.

The City recognizes that the economic status of a family might improve over time. To ensure that only the poorest families are catered for, the City requires registered citizens to reapply for indigent status every six months. Due to infrastructural constraints, there are instances where the City might not be able to service all indigent households that have successfully registered as a result of technical errors and inadequate infrastructure. In such cases, the City will strive to find alternative remedies to better the circumstances of the applicant.

The programme targets vulnerable citizens such as:

- The unemployed;
- Women and children;
- Youth;
- Senior citizens;
- Persons with Disabilities (PWDs);
- Displaced persons.

Poverty Definition & Income Bands

Band 1	R6 086.37	The lowest level of subsidy aimed at helping those on the borderline of poverty.
Band 2	R4 057.57	The middle level of subsidy, aimed at those who have some formal income but whose earnings fall below the survival level defined by the poverty index.
Band 3	R1 064.27	The highest level of subsidy, aimed at those with no formal income living in the most deprived circumstances

NB: Annually on 01 November in line with the Consumer Price Index (CPI) the ESP threshold amount increases. The City has different methods to identify indigent citizens.

Qualifying Criteria:

- Must be a South African Citizen;
- Must reside within the City of Johannesburg boundaries;
- Income should not exceed R6 086.37 on a monthly basis (this includes pensions, investments and other financial resources available).

Documentation required:

- Proof of income, SASSA Card, all bank statements (for last 3 months or sworn affidavit confirming that you do not have a bank account. Any other source of income must be declared);
- Proof of residence, City of Johannesburg Rates and Taxes account number or sworn affidavit from your local police station;
- Identify document;
- City of Johannesburg Rates and Taxes Account;
- City Power Pre-Paid Meter Account number;
- Eskom Pre-Paid Electricity Account Number, Conventional Account Number;
- Joburg Water Account/ Pre-paid Account Number (TU number on the receipt (Interface tag unit number).

Types of rebates you may qualify for:

- Property owners qualify for subsidy on their rates, refuse, sewer, water and electricity services;
- Non-property owners or non-account holders qualify for rebates on water and electricity services.

Electricity

Score on Prevailing CoJ Poverty Index	Monthly allocation of free electricity (Kilowatt hours) per month on Conventional meters.	Monthly allocation of free electricity (Kilowatt hours) per month on Pre-paid meters.
Band 1	1 - 34	10 KWh
Band 2	35 - 69	20 KWh
Band 3	70 - 100	30 KWh

Electricity is capped at 150kwh per household per month

Water

Score on Prevailing CoJ Poverty Index	Allocation of additional free water per person per day (litres) per day	Monthly allocation cap of free water per household in which at least 50% of registered social package recipients qualify.
Band 1	1 - 34	25L
Band 2	35 - 69	50L
Band 3	70 - 100	50L

Water is capped at 15 kl per household per month

Pensioners (Aged 60 and above) whose property value does not exceed R2 500 000.00 (Two million five hundred thousand rand) qualify for rebates on their rates, sewer and refuse of between 70 and 100%. The account must be in the name of the applicant.

Working Age Citizens and the Unemployed (Aged 18-59) whose property value does not exceed R500 000.00 (Five hundred thousand rand) qualify for between 70 and 100% rebates on their rates, sewer and refuse. The account must be in the name of applicant.

Registration centres are located in various Customer Service Centres or municipal offices closer to areas where indigent people reside. It is the responsibility of individual citizens to visit municipal offices, to apply for subsidy consideration.

Special COVID-19 Arrangements

In order to limit infections and as part of the continued fight against the Coronavirus. Only new applications will be processed at Customer Service Centres. ESP registrations expiring during this period will continue to be extended.

To renew your application:

- Email your personal and account details (ESP number, name, surname, account number/s and contact number) to: espunit@joburg.org.za; or
- SMS the same to 063 708 9569.

For enquiries: Contact 011 407 6515/6688/6751

Expanded Social Package for 2020/2021

PROPERTY RATES

No	Category	Ratio 2019/2020	Ratio 2020/2021	Ratio 2020/2021	Ratio 2020/2021	% Increase
1	Agricultural Residential	1:1	0.007749	1:1	0.008059	4%
2	Agricultural Business	1:2.6	0.020147	1:2.5	0.020147	4%
3	Agricultural other	1:1	0.007749	1:1	0.008059	4%
4	Residential	1:1	0.007749	1:1	0.008059	4%
5	Residential Consent use	1:2	0.015499	1:2	0.016118	0%
6	Business and Commercial	1:2.6	0.020147	1:2.5	0.020147	4%
7	Sectional title business	1:2.6	0.020147	1:2.5	0.020147	4%
8	Sectional title residential	1:1	0.007749	1:1	0.008059	4%
9	Sectional title other	1:1	0.007749	1:1	0.008059	4%
10	Municipal property	0	0	0	0.000000	0%
11	Farming	1:0.25	0.001937	1:0.25	0.002015	4%
12	Mining land	1:2.6	0.020147	1:2.5	0.020147	4%
13	Vacant land	1:4	0.030996	1:4	0.032236	4%
14	PSI	1:0.25	0.001937	1:0.25	0.002015	4%
15	PSI privately owned	1:0.25	0.001937	1:0.25	0.002015	4%
16	Private open spaces	1:0.25	0.001937	1:0.25	0.002015	4%
17	Public open spaces	1:0.25	0.001937	1:0.25	0.002015	4%
18	State	1:1.5	0.011623	1:1.5	0.012088	4%
19	Education	1:0.25	0.001937	1:0.25	0.002015	4%
20	Religious	1:0	0	0	0.000000	0%
21	Multipurpose Residential	1:1	0.007749	1:1	0.008059	4%
22	Multipurpose Business	1:2.6	0.020147	1:2.5	0.020147	4%
23	R E of a township	1:2.6	0.020147	1:2.5	0.020147	4%
Category of ownership						
1	Public Benefit Organisation	1:0.25	0.001937	1:0.25	0.002015	4%
Penalty Tariff						
1	Unauthorized use	1:6	0.046494	1:6	0.048354	4%

The City of Johannesburg levies property rates on the market value of a property. Properties are grouped into categories and rated according to their values in the City's General Valuations Roll which is based on the size of the property and the improvements on the building. No rates are levied on the first R350 000 of the property value.

Increased Percentage

Water 6.
